



IMPORTANT SAFETY INSTRUCTIONS

DANGER

When using electrical appliances, especially when children are present, basic safety precautions should always be followed.

As with most electrical appliances, electrical parts are electrically live even when switch is off. To reduce the risk of death by electric shock:

- Always unplug this appliance from the electrical outlet immediately after using.
- Do not place or drop into water or other liquid.
- Do not reach for an appliance that has fallen into water. Unplug it immediately.

WARNING

To reduce the risk of burns, fire, electric shock or injury to persons:

- An appliance should never be left unattended when it is plugged in.
- Close supervision is necessary when this appliance is used by, on or near children or individuals with certain disabilities or special needs.
- Use this appliance only for its intended use as described in this manual. Do not use attachments not recommended by the manufacturer.
- Never operate this appliance if it has a damaged cord or plug, if it is not working properly, if it has been dropped or damaged, or if it has been dropped into water.
- Keep the cord away from the heated surfaces. Do not wrap the cord around the appliance.

WARRANTY

We stand behind our products and believe in customer satisfaction and service, so with all domestic web or telesales returns, we offer free return shipping. Box Blind Defrost offers 100% product replacement for your HB200 unit on any workmanship or component defects limited to 1 year from date of purchase. Visit <https://boxblinddefrost.com/refund-and-returns-policy/> for more information

DISCLAIMER

This product is solely intended for use with small, heated enclosures, including hunting blinds. Use of this product does not guarantee defrosting of windows or any other part of an enclosure. Improper use may result in poor visibility, fires, electric shock, or other injuries or damages. Do not use this product or your chosen electrical power source near water, flammable liquids, or otherwise flammable materials. This product is intended to be purchased and used by those over the age of 18. If this product is used by anyone under the age of 18, adult supervision is required. Hale Outdoor Products, Inc. cannot guarantee the safety, reliability, durability, or performance of this product; you should take the necessary care to ensure proper use of this product before use.



Box Blind Defrost System

- 2 Defrost Heat Bars with 25' wire harness
- 2 Magnet Holder Bars
- lighted LED ON/OFF switch
- quick connect battery tabs
- permanent installation hardware (optional use)

Register your New Product Today!

By registering your Box Blind Defrost, you will receive special offers.

Register online at BoxBlindDefrost.com

Questions or Comments: Call 715-204-9018 or visit BoxBlindDefrost.com

INSTALLATION GUIDE

SAFETY TIPS

- Always wear appropriate safety gear during installation.
- Follow all manufacturer's guidelines and instructions for a safe installation.
- Periodically check and maintain the blind to ensure it remains secure and in good condition.

DEFROST INSTALLATION GUIDE

1. Tools Required:

- Screwdriver
- 3/4" hole hawg or spade drill bit (on/off switch)
- Power drill (optional hanger straps)

2. Safety Equipment:

- Work gloves
- Safety glasses

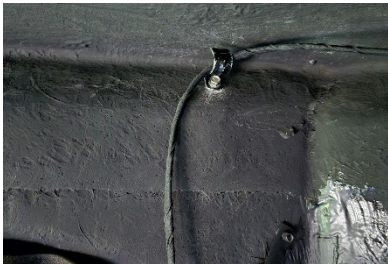
STEP-BY-STEP INSTALLATION

1. Unpack the Defrost kit:

- Unbox all components and check the parts list to ensure all pieces are included.
- Lay out all parts in an organized manner. The shortest Defroster will go on your primary window, closest to the battery.

2. Select windows to be Defrosted - Primary 1 and Primary 2:

- Ensure the window provides a clear line of sight to the intended hunting area



3. Attach the hanger straps:

- Install hanger straps A, B, C, and D as shown in the example for Primary 1 and 2
- Tighten securely.
- If additional window Defrosters were purchased, install the remaining hanger straps in the same manner as Primary 1 and 2

4. Install Box Blind Defrost wire harness:

- Box Blind Defrost primary wire harness will hang from window clip A
- Allowing the wire to drape so the ON/OFF switch is near the console.
- Install Primary 1 by opening the window, placing Defrost Bar on the window and affixing magnets to the outside of the window at the corresponding Defrost Bar ends
- Install Primary 2 by running the wire harness around the top of the blind ending at the second window, then open the window, placing Defrost Bar on the window and affixing magnets to the outside of the window at the corresponding Defrost Bar ends.
- Clip each wire harness to the edge of the window with the provided binder clips. Shown on right.



Clip wire harness to the side of the window

Scan QR Code with your phone to watch our Installation video



5. Install the Toggle On/Off Switch:

- Most blinds have a console on which the ON/OFF switch may be mounted
- Drill 3/4" hole in an easily accessible position on the face or side of the console.
- A second hole on the bottom of the console may be desired to run the battery wires.
- Confirm the terminal orientations on the switch
- Remove ON/OFF switch terminals
- Push the switch into the hole on the console, orient the green LED towards the top
- Reattached switch terminals, ensuring the black lead/terminal is positioned on the top



6. Attach tab terminals to Lithium Battery:

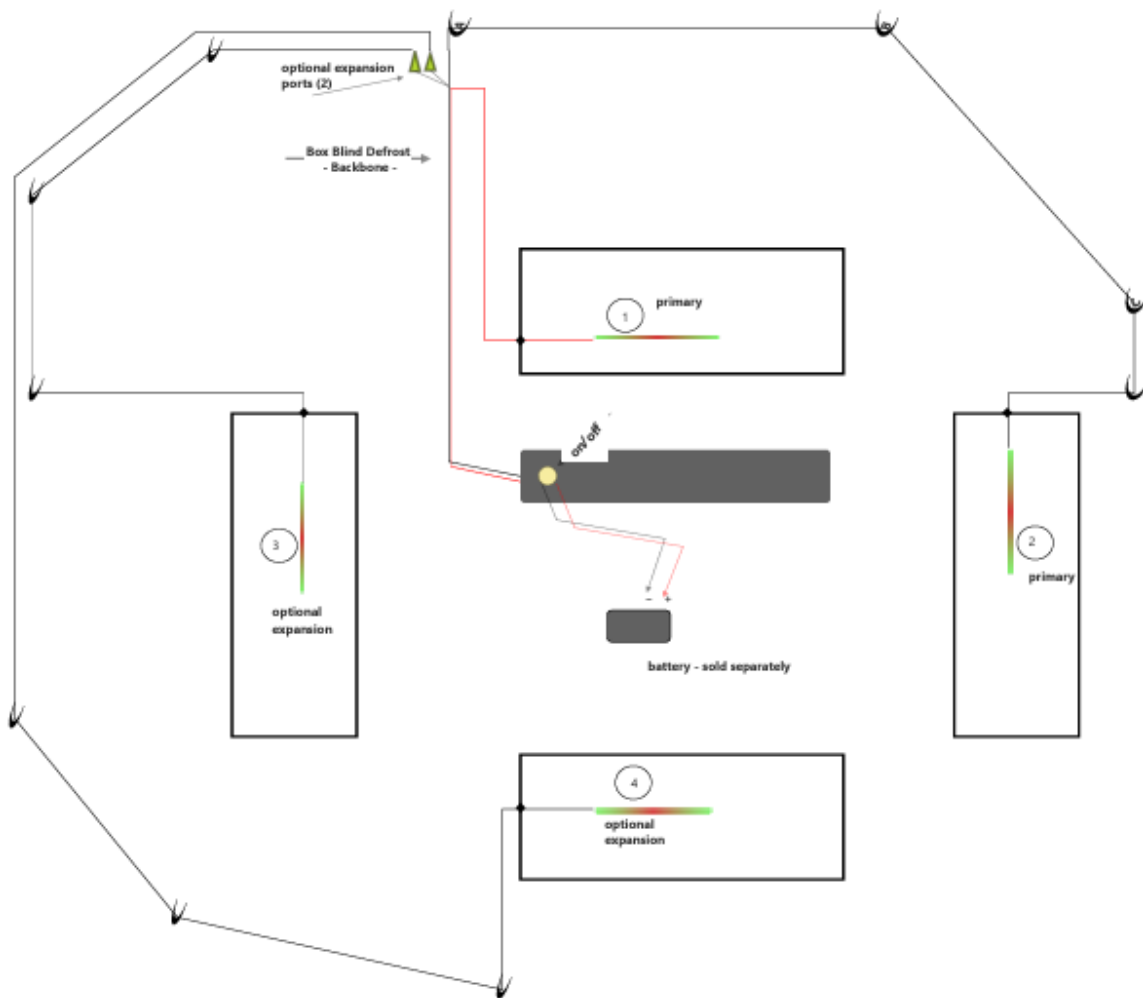
- Place Lithium battery on the blind floor.
- Connect terminals to the battery.

Orange = positive
Black = negative



7. Final Adjustments:

- Double-check all connections and fasteners.
- Make any necessary adjustments to ensure the blind is secure and stable.



LIMITED WARRANTY

Hale Outdoor Products, Inc. extends a limited warranty on this product only to the consumer who originally purchased the product ("you"). No warranty is extended to any subsequent owner or other transferee of this product. For details of this limited warranty, please go to www.boxblinddefrost.com.

LIMITATION OF LIABILITY

THE REMEDIES DESCRIBED IN HALE OUTDOOR PRODUCTS, INC.'S LIMITED WARRANTY ARE YOUR SOLE AND EXCLUSIVE REMEDIES AND OUR ENTIRE LIABILITY FOR ANY BREACH OF THIS LIMITED WARRANTY. TO THE FULLEST EXTENT PERMITTED BY LAW, OUR LIABILITY SHALL UNDER NO CIRCUMSTANCES EXCEED THE ACTUAL AMOUNT PAID BY YOU FOR THE DEFECTIVE PRODUCT, NOR SHALL WE UNDER ANY CIRCUMSTANCES BE LIABLE FOR ANY CONSEQUENTIAL, INCIDENTAL, SPECIAL, OR PUNITIVE DAMAGES OR LOSSES, WHETHER DIRECT OR INDIRECT. SOME STATES DO NOT ALLOW THE EXCLUSION OR LIMITATION OF INCIDENTAL OR CONSEQUENTIAL DAMAGES, SO THE ABOVE LIMITATION OR EXCLUSION MAY NOT APPLY TO YOU. EXCEPT FOR THE LIMITED WARRANTY SET FORTH ABOVE, HALE OUTDOOR PRODUCTS, INC. MAKES NO WARRANTY WHATSOEVER WITH RESPECT TO THE PRODUCT, INCLUDING ANY WARRANTY OF MERCHANTABILITY, WARRANTY OF FITNESS FOR A PARTICULAR PURPOSES OR WARRANTY AGAINST INFRINGEMENT OF INTELLECTUAL PROPERTY RIGHTS OF A THIRD PARTY, WHETHER EXPRESS OR IMPLIED BY LAW, COURSE OF DEALING, USAGE OF TRADE, OR OTHERWISE.

DISCLAIMERS

This product is only to be used by individuals 18 years or older. Use by any individual under the age of 18 must be supervised by an adult at all times. Do not allow children to handle this product or the required portable electricity source without supervision.

RISK OF INJURY

This product requires a portable electric device for use. Portable electricity may result in electric shocks, burns, fires, and other injuries. Do not use this product, or its portable electricity source, near liquids or flammable items. Inspect the product prior to use for visible damage. Do not use this product if any part of the product is broken, has exposed wiring, or otherwise shows any sign of damage.

This product is only an aid to reduce condensation or frost on hunting blinds or similar enclosure windows. Many factors, such as temperature, electricity load, weather, visibility, and location, may affect the product. Hale Outdoor Products, Inc. cannot guarantee the effectiveness of this product. Do not rely on this product for clear or otherwise unobstructed views from hunting blinds or related enclosures. Hale Outdoor Products, Inc. is not responsible for injuries resulting from or related to hunting activities performed while the product is in use.

READ THE PROVIDED INSTRUCTIONS. Hale Outdoor Products, Inc. is not responsible for misuse of the product or for any damages, to the product, other items, or individuals, due to the misuse of the product or failure to properly follow the provided instructions. This product cannot prevent hunting accidents or misshots, nor can it ensure hunting accuracy. Do not rely on the product for hunting or related activities.

DO NOT MODIFY, ATTEMPT TO FIX, OR OTHERWISE CHANGE THE PRODUCT. Product modifications or failure to properly maintain the product may change the effectiveness of the product and may result in injury.

The product must be supervised at all times. Do not leave the product running or otherwise plugged in to its portable electricity source when not directly supervised. Do not leave the product plugged in to its portable electricity source when not in use. Leaving the product plugged in when not in use or directly supervised may result in serious damage, including fire, injury, or death.

Do not attempt to place any object under, near, on, or otherwise touch the product's wiper blades when in use. Doing so may cause injury, damage, or otherwise break the product.